

MOBILE PHONES & OTHER PERSONAL MOBILE DEVICES POLICY

AT COBRAM SECONDARY COLLEGE

The school of choice for the Cobram Community



Help for non-English speakers

If you need help to understand the information in this policy please contact Cobram Secondary College, 5871 1700.

STATEMENT OF COMMITMENT

Cobram Secondary College believes every student deserves a safe and positive learning experience where they are engaged and supported to reach their full potential.

The College adheres to the principles of Australian democracy and takes into account the diversity of all children and makes reasonable efforts to accommodate them. This includes (but is not limited to) the needs of Aboriginal and Torres Strait Islander children, children from culturally and linguistically diverse backgrounds, children with disabilities, children who identify as lesbian, gay, bisexual, transgender, intersex and questioning (LGBTIQ+) individuals, and children who are vulnerable.

The College is committed to creating a child safe environment protecting children from all forms of abuse and neglect.

PURPOSE

To explain to our school community the Department's and Cobram Secondary College policy requirements and expectations relating to students using mobile phones and other personal mobile devices during school hours.

SCOPE

This policy applies to:

1. All students at Cobram Secondary College and,
2. Students' personal mobile phones and other personal mobile brought onto school premises during school hours, including recess and lunchtime.

DEFINITIONS

A **mobile phone** is a telephone with access to a cellular (telecommunication) system, with or without a physical connection to a network. For the purpose of this policy, “mobile phone” refers to mobile phones and any device that may connect to or have a similar functionality to a mobile phone such as smart watches.

POLICY

Cobram Secondary College understands that students may bring a personal mobile phone to school, particularly if they are travelling independently to and from school.

At Cobram Secondary College

- Students who choose to bring mobile phones to school must have them switched off and securely stored in the student’s locker during school hours
- Exceptions to this policy may be applied if certain conditions are met (see below for further information)
- When emergencies occur, parents or carers should reach their child by calling the school’s office.

Personal mobile phone use

In accordance with the Department’s [Mobile Phones — Student Use Policy](#) issued by the Minister for Education, personal mobile phones must not be used at Cobram Secondary College during school hours, including lunchtime and recess, unless an exception has been granted.

Where a student has been granted an exception, the student must use their mobile phone for the purpose for which the exception was granted, and in a safe, ethical and responsible manner.

Secure storage

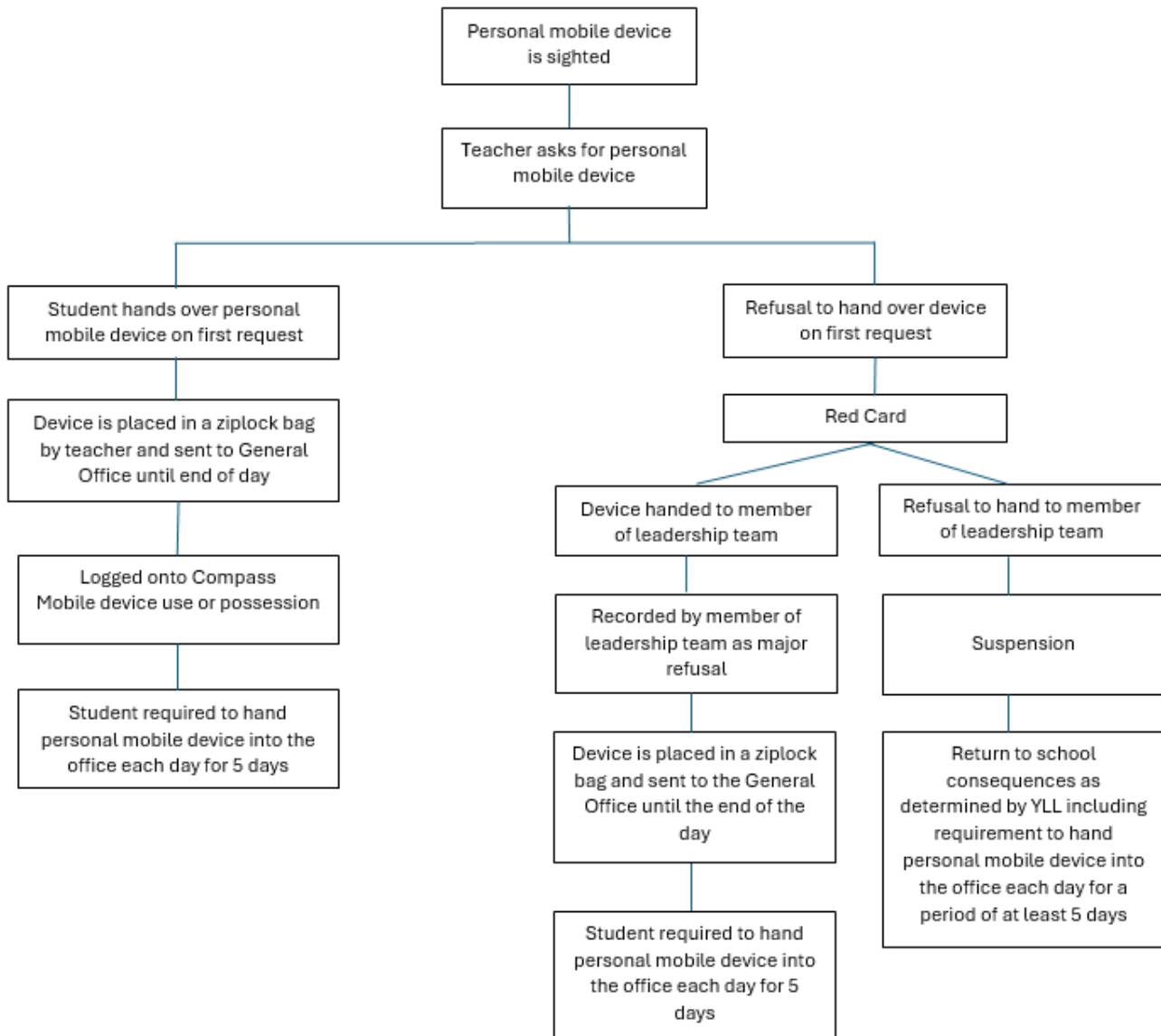
Mobile phones owned by students at Cobram Secondary College are considered valuable items and are brought to school at the owner’s (student’s or parent/carer’s) risk. Students are encouraged not Cobram Secondary College does not have accident insurance for accidental property damage or theft. Students and their parents/carers are encouraged to obtain appropriate insurance for valuable items.

Where students bring a mobile phone to school, Cobram Secondary College will provide secure storage. Secure storage is storage that cannot be readily accessed by those without permission to do so. At Cobram Secondary College students are required to store their phones in their allocated locker. They are required to provide their own lock for their locker.

Enforcement

Students who use their personal mobile phones inappropriately at Cobram Secondary College may be issued with consequences consistent with our school’s existing student engagement policies *Student Wellbeing and Engagement*.

Mobile Devices Consequences



At Cobram Secondary College inappropriate use of mobile phones is **any use during school hours**, unless an exception has been granted, and particularly use of a mobile phone:

- in any way that disrupts the learning of others
- to send inappropriate, harassing or threatening messages or phone calls
- to engage in inappropriate social media use including cyber bullying
- to capture video or images of people, including students, teachers and members of the school community without their permission
- to capture video or images in the school toilets, changing rooms, swimming pools and gyms
- during exams and assessments

Exceptions

Exceptions to the policy:

- may be applied during school hours if certain conditions are met, specifically,
 - Health and wellbeing-related exceptions; and
 - Exceptions related to managing risk when students are offsite.

- can be granted by the Principal, or by the teacher for that class, in accordance with the Department's [Mobile Phones — Student Use Policy](#).

The three categories of exceptions allowed under the Department's [Mobile Phones — Student Use Policy](#) are:

1. Learning-related exceptions

Specific exception	Documentation
For specific learning activities (class-based exception)	Unit of work, learning sequence
For students for whom a reasonable adjustment to a learning program is needed because of a disability or learning difficulty	Individual Learning Plan, Individual Education Plan

2. Health and wellbeing-related exceptions

Specific exception	Documentation
Students with a health condition	Student Health Support Plan
Students who are Young Carers	A localised student record

3. Exceptions related to managing risk when students are offsite

Specific exception	Documentation
Travelling to and from excursions	Risk assessment planning documentation
Students on excursions and camps	Risk assessment planning documentation
When students are offsite (not on school grounds) and unsupervised with parental permission	Risk assessment planning documentation
Students with a dual enrolment or who need to undertake intercampus travel	Risk assessment planning documentation

Where an exception is granted, the student can only use the mobile phone for the purpose for which it was granted.

Camps, excursions and extracurricular activities

Cobram Secondary College will provide students and their parents and carers with information about items that can or cannot be brought to camps, excursions, special activities and events, including personal mobile phones.

Exclusions

This policy does not apply to

- Out-of-school-hours events
- Travelling to and from school
- Students undertaking workplace learning activities, e.g. work experience

COMMUNICATION

This policy will be communicated to our school community in the following ways:

- Available publicly on our school's website
- Included in staff induction processes and staff training
- Included on staff portal
- Hard copy available from school administration upon request

RELATED POLICIES AND RESOURCES

- Related Policies: *Student Wellbeing and Engagement, Code of Conduct, Personal Property, Bullying etc.*] [POLICIES | Cobram SC](#)
- [Mobile Phones — Student Use Policy](#)

POLICY REVIEW AND APPROVAL

Policy last reviewed	2024
Consultation	Principal
Approved by	Principal
Next scheduled review date	2027